



The Clyde is the original and standard-bearer of clamshell machining.

The Clyde represented a step change when it was introduced to the market more than 40 years ago: a new solution generating new levels of performance, strength, speed and accuracy.

Today it remains the benchmark for heavy-duty pipecutting and bevelling; a tried, trusted and proven feature of subsea operations over many years.

Why?

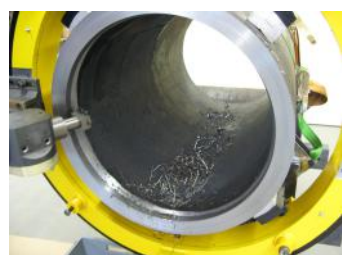
- A hydrostatic bearing system that underpins the Clyde's industry-leading performance in longevity, rigidity and accuracy.
- A steel split-frame design that enables inline pipe to be cut and bevelled simultaneously.
- An adaptable and customer-focused design and manufacture process that is capable of delivering solutions for pipes ranging from 6" to 80" diameter – modified or customised every time to suit.
- A $\pm 0.05\text{mm}$ welding preparation performance that meets the standards demanded in the automatic welding era – and eliminates the hidden costs of high weld failure rates.
- Hydraulic or pneumatic power options. The Clyde can remove weld beading, representative of a range of capabilities that make it more than simply cutting apparatus: that make it a portable machining tool.



**The definitive
subsea solution**



**Hydrostatic bearing
for top performance**



**Pipe cutting capabilities
up to 80" diameter**

**The heavy-duty
machining tool of choice**

Our Clyde Range

At Glacier Energy, we don't just believe in the traditional values of engineering. They're the cornerstones of our operations.

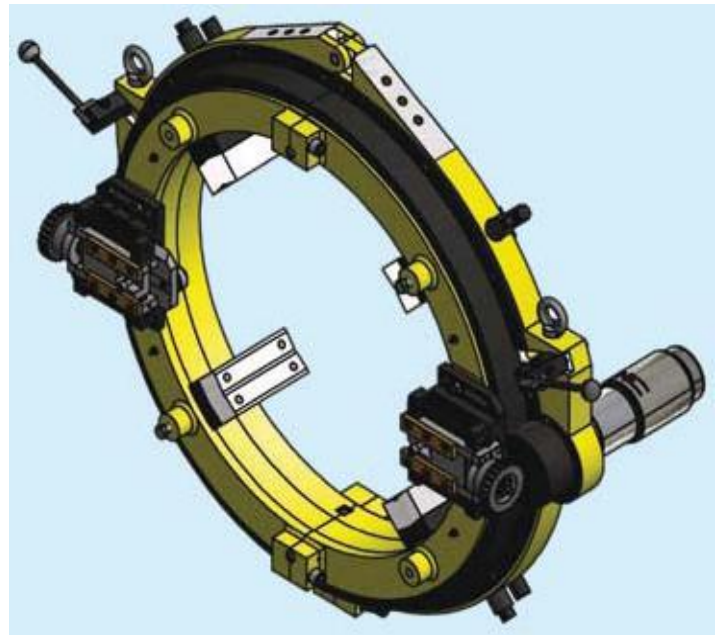
That's why our Clyde range of products is defined by strength, trust and reliability.

We blend that philosophy with an innovative and adaptable approach to create solutions that reflect modern-day business imperatives. Solutions that are characterised by speed, accuracy and versatility.

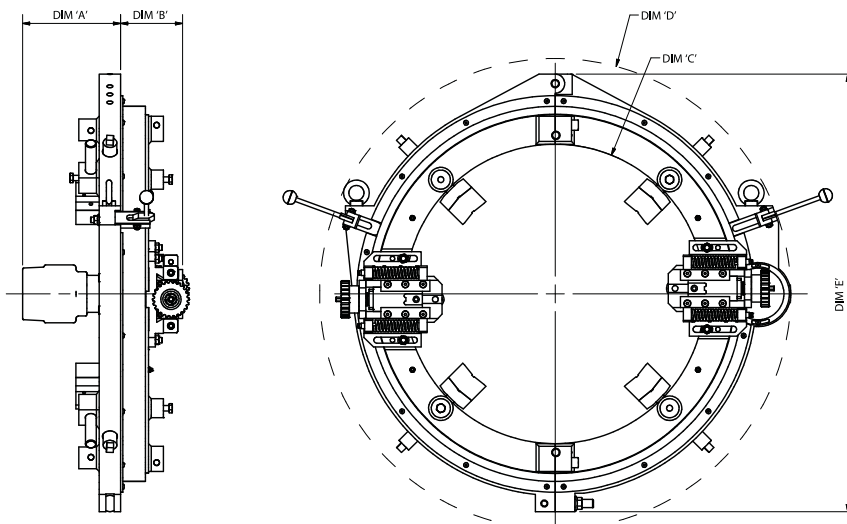
Our Clyde products, based on hydrostatic bearing technology, are built and delivered to meet the toughest operational tests and the sternest logistical challenges anywhere in the world.

And because they're cold-cutting machines, they're helping our customers achieve the best possible health & safety standards.

Clyde Dimension Table



MODEL No.	UNIT	PIPE RANGE	DIM A HYDRAULIC DRIVE	DIM A AIR DRIVE	DIM B	DIM C	DIM D	DIM E	MACHINE WEIGHT
C1	Imperial	06"-12"	6.875	10.75	5.687	15.50	31.50	28.187	339 lbs
	Metric	152-304mm	174.60	273.10	144.40	393.70	800.10	715.90	154 kg
C2	Imperial	12"-18"	6.875	10.75	5.687	24.50	37.50	34.187	423 lbs
	Metric	304-457mm	174.60	273.10	144.40	622.30	952.50	868.30	192 kg
C3	Imperial	18"-24"	6.875	10.75	5.687	27.50	43.50	40.187	508 lbs
	Metric	457-610mm	174.60	273.10	144.40	698.50	1104.90	1020.70	231 kg
C4	Imperial	24"-30"	6.875	10.75	5.687	33.50	49.50	46.187	597 lbs
	Metric	610-762mm	174.60	273.10	144.40	850.90	1257.30	1173.10	271 kg
C5	Imperial	30"-36"	6.875	10.75	5.687	39.50	55.50	52.187	683 lbs
	Metric	762-915mm	174.60	273.10	144.40	1003.30	1409.70	1325.50	310 kg
C6	Imperial	36"-42"	6.875	10.75	5.687	45.50	61.50	58.187	860 lbs
	Metric	915-1066mm	174.60	273.10	144.40	1155.70	1562.10	1477.90	390 kg
C7	Imperial	42"-48"	6.875	10.75	5.687	52.00	67.50	64.187	992 lbs
	Metric	1067-1220mm	174.60	273.10	144.40	1320.80	1714.50	1630.30	450 kg
C8	Imperial	48"-54"	6.875	10.75	5.687	58.00	75.00	71.187	1212 lbs
	Metric	1220-1372mm	174.60	273.10	144.40	1473.20	1905.00	1808.10	550kg
C9	Imperial	54"-60"	6.875	10.75	5.687	64.00	81.00	78.187	1518 lbs
	Metric	1372-1524mm	174.60	273.10	144.40	1625.60	2057.40	1985.90	690kg



Glacier Energy

T: +44 (0)141 763 1516

E: gms@glacierenergy.com

F: +44 (0)141 778 4872

Contact your local Glacier Energy office or find one of our international partners:

www.glacierenergy.com

Specialist Services for Energy Infrastructure.